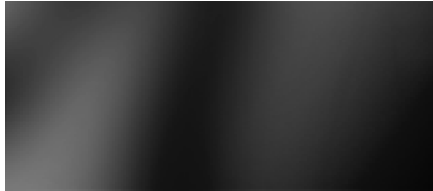
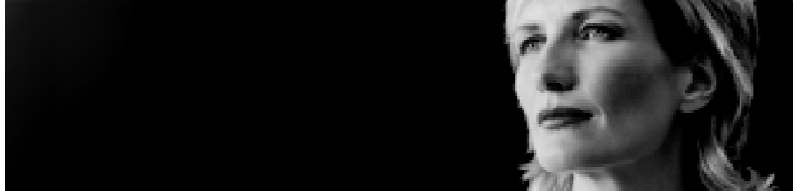


# Enteros UpBeat Performance Explorer-i™



Enteros Performance Explorer-i delivers rapid analysis and root cause identification of performance problems in production databases. Its comprehensive reports, utilities and models utilize patented analytics to bring unprecedented speed, precision and scope to the analysis task, with negligible impact on the systems being analyzed.



## **Speed root cause and change impact analysis**

High-transaction, business-critical applications strain the performance of even the best designed databases. In this workload regime, preservation of application availability is driven by the speed with which performance problems can be analyzed and resolved. Performance Explorer-i puts details on changed SQL or changed SQL plans, system statistics, wait events, latches – anything that could negatively impact database availability or performance – in the hands of operations staff at the moment they need them, reducing many analysis tasks from hours to seconds.

## **Tap the power of advanced performance analytics**

Because Performance Explorer-i can process vast amounts of performance data – both historical and current – it also provides a rich set of navigation and analysis functions that can be applied to that data. Navigate using browse, search, zoom, visualize, view, and report functions. Conduct snapshot change analysis, SQL performance analysis, parameter change analysis, SQL change analysis, visual root cause analysis, and RAC cross-node analysis. Performance Explorer-i puts all of it at your fingertips.

## **Work safely in extreme-load environments**

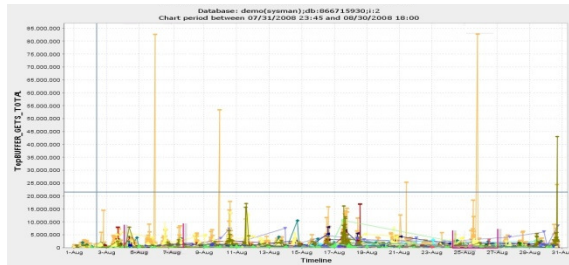
Performance Explorer-i is designed to operate efficiently and safely over a wide range of database configurations, time frames, and environments. It supports analysis across multiple databases, multiple time windows and – in the case of change impact analysis – multiple database versions from the same vendor. It can efficiently process very large amounts of performance-related data with no noticeable impact on the performance of the target databases or the servers on which they run.

# Key Features

## Performance Analysis Features

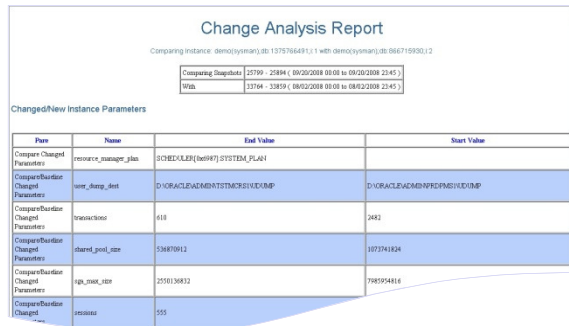
### Performance spike analysis

Identify areas of performance spikes and degradations using patented analysis technology that reduces analysis time from hours or days to less than a minute.



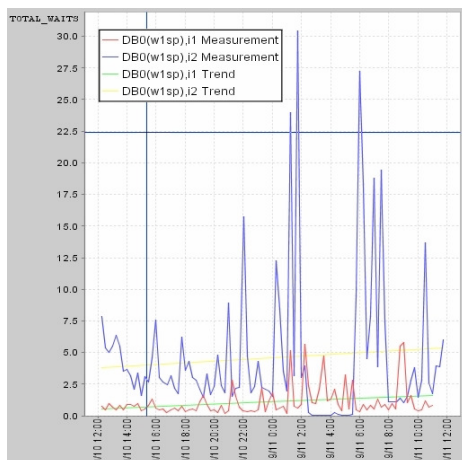
### Change impact analysis

Detailed change impact analysis on cause of performance and availability problems with immediate drilldown into detailed information.



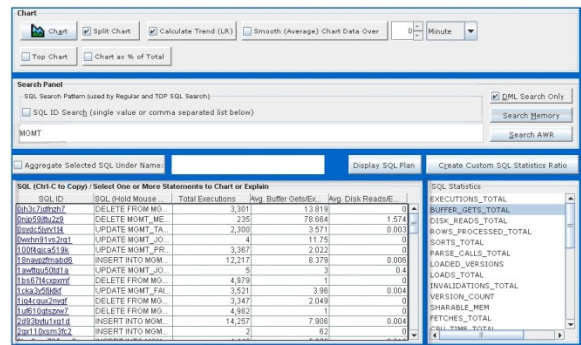
### Oracle RAC analysis

Visualize performance metrics across multiple databases or multiple nodes of a RAC cluster. Access DLM statistics, RAC system statistics, or RAC latch information with a single click.



### SQL impact analysis

Pinpoint problematic SQL using Advanced Top SQL Search enforced with DML and SQL pattern search filters. Drill Down to the level of individual SQL queries to determine how a change in different SQL characteristics is affecting the system. Similar queries can be aggregated to display cumulated impact on system performance.



### Fast navigation of critical performance metrics

Navigate summary and detail information on system statistics, wait events, latches, SQL and other performance data efficiently and effectively. Eliminate painful eyeballing across Statspack and AWR reports when time to resolution is critical.

### Cross-database analysis

Analyze heterogeneous database environments with built-in support for multiple commercial database systems and multiple versions of the same commercial DBMS. Perform problem and root cause analysis across multiple instances or multiple databases.

### High performance visualization

Visualize tens of thousands of data points in a few seconds. Instantly superimpose current and historical time periods to identify seasonal performance patterns and more.

### Integrated trending and forecasting

Clearly identify trends in database performance with smoothing (averaging) filters and linear regression models. Use trending projections to facilitate capacity planning.

### Batch analysis generation

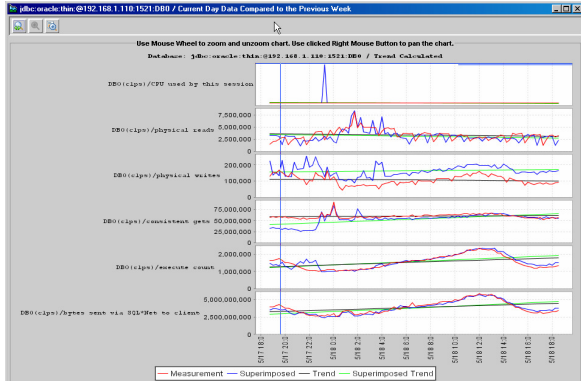
Run analysis in batch and in parallel across hundreds of databases.



# Performance Reporting Features

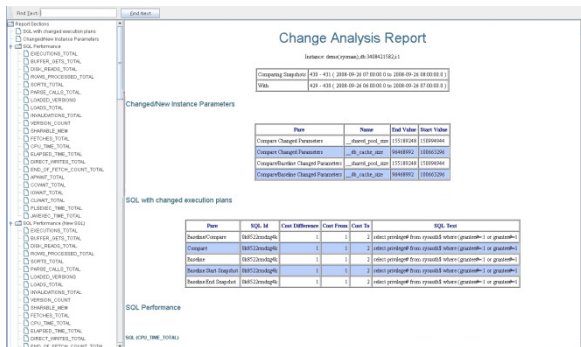
## Database Performance Overview

Gain a single-page view of the most important database performance metrics. Use the historical data overlay to immediately discover changes in database performance through visual inspection.



## Current Database Change Profile

Accelerate your change root cause analysis with this report highlighting recent changes made to the database that may be affecting performance. Performance Explorer-i detects changes from new code deployments and upgrades – official or otherwise.

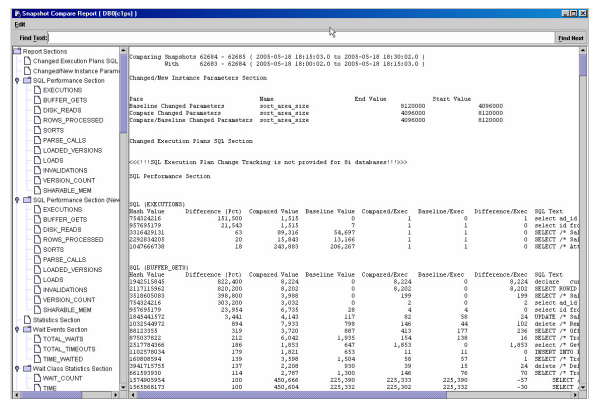


## Real-time Database Check

Determine immediate threats to database stability and potential performance bottlenecks. View excessive active sessions, latch connections, RAC-related resource contention, slow I/O (for both random and sequential data access), and excessive query parallelism in the database.

## Snapshot Change Analysis

Gain a holistic view of all changes that occurred over a specific time period, including changes in SQL statistics, newly introduced SQL, changed SQL plans, system statistics, wait events, latches, and more. Customize change reports by selecting time intervals for snapshot and baseline, change thresholds, and report details. Create a library of customized snapshots for fast, single-click generation.



## Visual Root Cause Analysis

Find performance problems quickly using your eyes. View graphical representations of changes in key database metrics, including system statistics, wait events, latches, enqueues, segment I/O, datafile I/O, "Undo" tablespace I/O, rollback segments I/O, dictionary cache, library cache, and customer user SQL.

## Batch Report Generation

Instantly generate HTML graphical reports using ChartBag Reporting Module. Report Templates can be saved and run in batch mode for continuous web publishing.

# Performance Explorer-i Summary

## Summary of Benefits

- Speed root cause and change impact analysis
- Tap the power of advanced performance analytics
- Work safely in extreme-load environments

## Summary of Features

### Performance Analysis

- Performance spike analysis
- Change impact analysis
- Oracle RAC analysis
- SQL impact analysis
- Fast navigation of critical performance metrics
- Cross-database analysis
- High performance visualization
- Integrated trending and forecasting
- Batch analysis generation

### Performance Reporting

- Database Performance Overview
- Current Database Change Profile
- Real-time Database Check
- Snapshot Change Analysis
- Visual Root Cause Analysis
- Batch Report Generation

## Supported Client Operating Systems

- Windows XP/7
- Windows 2003/2008 Server
- Linux

## Supported Database Systems

- Oracle 10g, 11g
- Oracle RAC 10g, 11g
- Oracle DataGuard 10g, 11g

## Integral Part of Enterprise Production Performance Management (EPPM) Platform

Performance Explorer-i is an integral part of Enteros's innovative EPPM platform that supports performance problem management across the enterprise over all stages of the performance problem lifecycle. The complete EPPM platform includes **Grid2Go™** for proactive, fine-grain, multi-application performance problem identification; **DBAct™** for real-time performance problem remediation of databases; **Performance Explorer-i™** for rapid, visual root cause, change impact and scalability analysis of databases; **High Load Capture™** for rapid, graphical root cause and scalability analysis of multi-tiered applications; and **Load2Test™** for performance validation with integrated load testing and load test root cause analysis.

## About Enteros

Enteros helps our customers reduce and mitigate the risk of business-impacting outages and degradations caused by enterprise performance issues. We have the only comprehensive software platform focused entirely on Enterprise Production Performance Management and proven to increase the availability of business-critical systems at companies like eBay, Yahoo, and Adobe. In business since 2004, Enteros is privately held. Our headquarters are located in Sunnyvale, Silicon Valley, CA

*For more information contact us by phone, email or web.*

<b>Phone (Toll Free)</b>	+1 (866) 529-1981
<b>Phone (Local)</b>	+1 (408) 824-1292
<b>Email</b>	<a href="mailto:info@enteros.com">info@enteros.com</a>
<b>Web</b>	<a href="http://www.enteros.com">www.enteros.com</a>

